

Introduction to Moodle

digital learning support provided by the Teaching and Learning Exchange

In this workshop you will ...

- Explore Moodle's layout, structure and navigation
- Set up and edit some of the most commonly used Moodle features and functions



The workshop does not...

- Mean that you will have a great Moodle site!

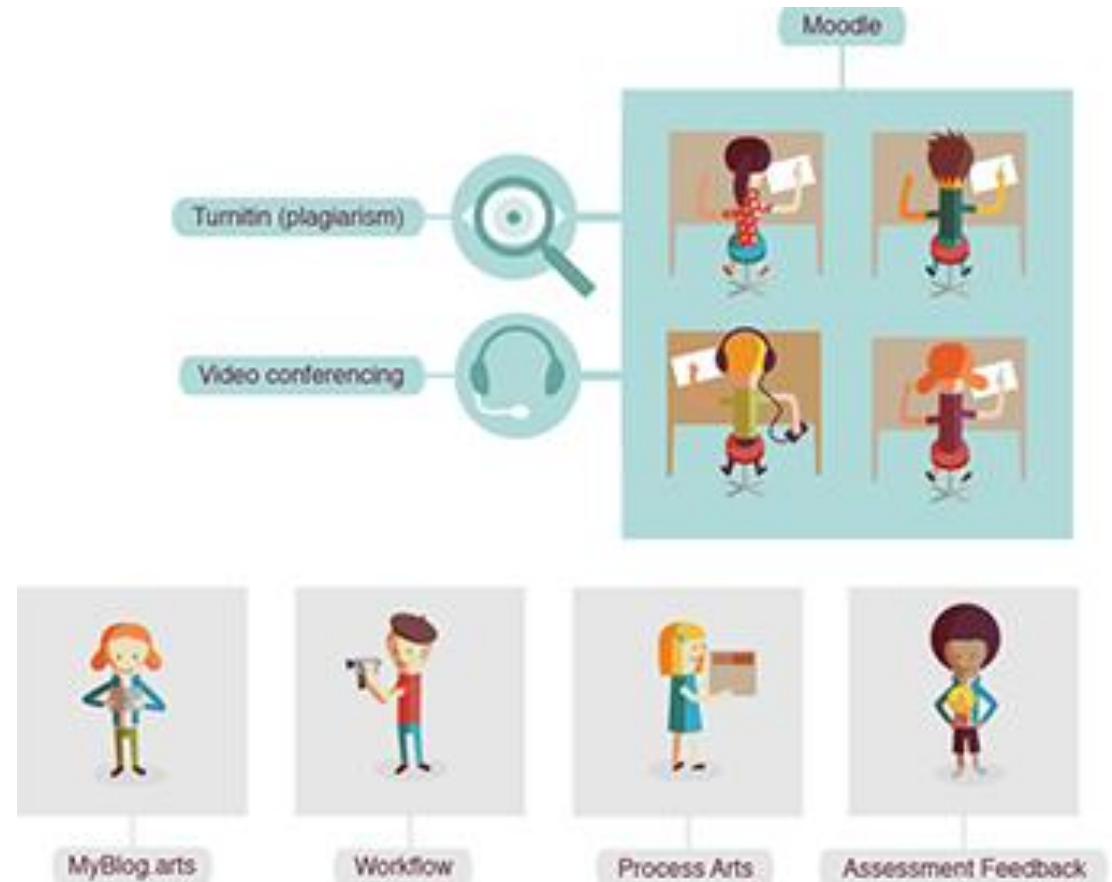


What is Moodle?

Moodle is part of the Digital Learning services offered at the University. The DL services consist of various platforms and tools:

- Plagiarism Checker - Turnitin
- Virtual Classroom - Bb Collaborate
- Assessment Feedback – OAT
- Myblog.arts – Wordpress
- Workflow(eportfolio) – Mahara

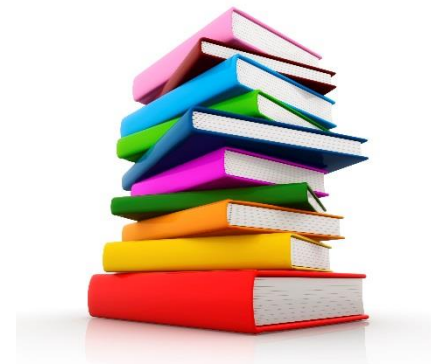
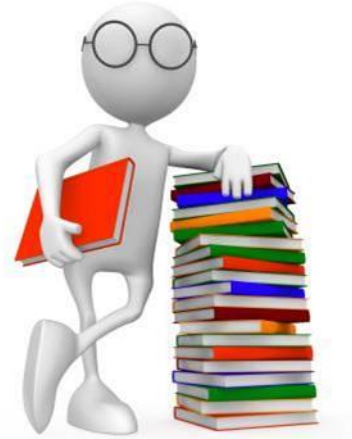
Moodle is the “hub” for course content and gateways to other platforms.



Why should I use Moodle?

Moodle can be used for various things:

- Communication
- Course Resources/Content
- Collaboration
- Teaching and Learning
- Checking for Plagiarism
- Online Assessment
- Virtual Classrooms
- Quizzes/Feedback
- And much, much more...



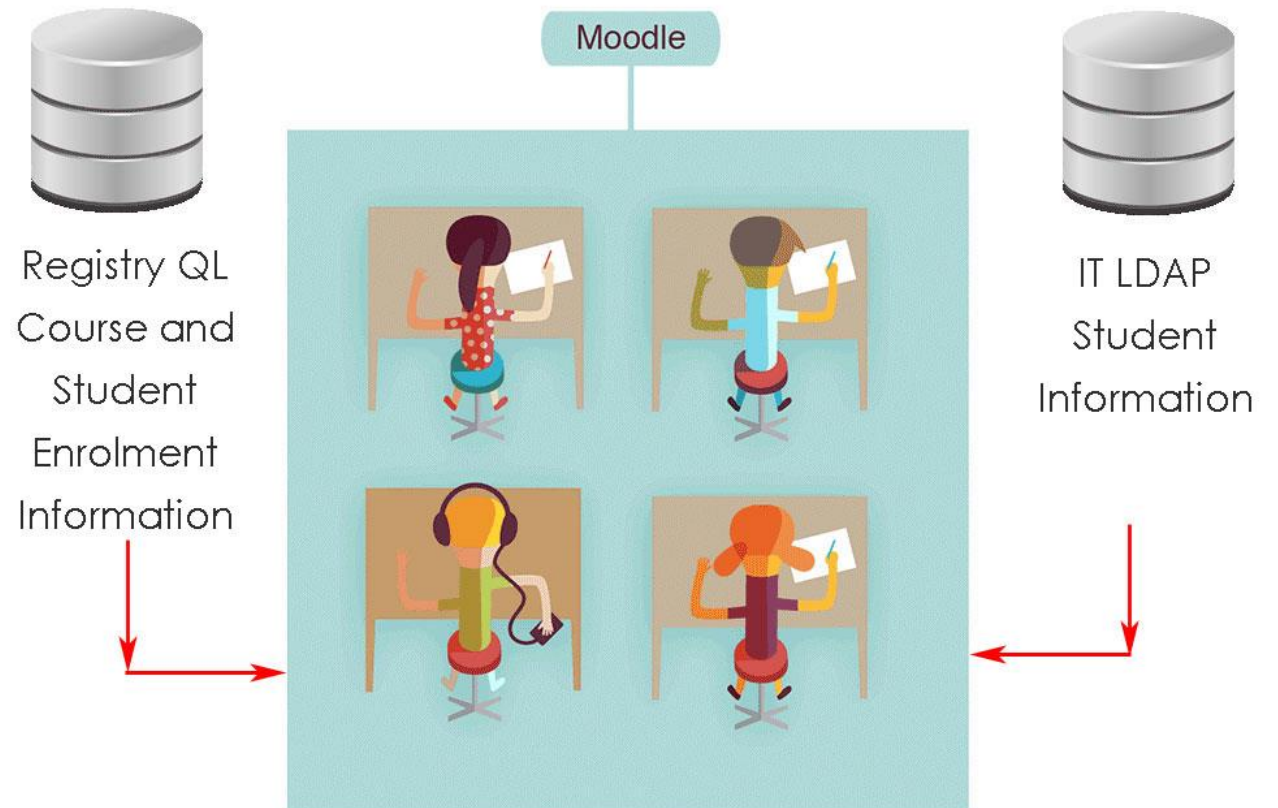
How are courses created and students added?

We get our student and course data from Registry and IT twice a day.

Registry have a database called QL that holds all the course information and what courses students are enrolled on.

Student account data is provided by IT on a system called LDAP. This information is also fed into Moodle.

This is what brings the students and the courses together.

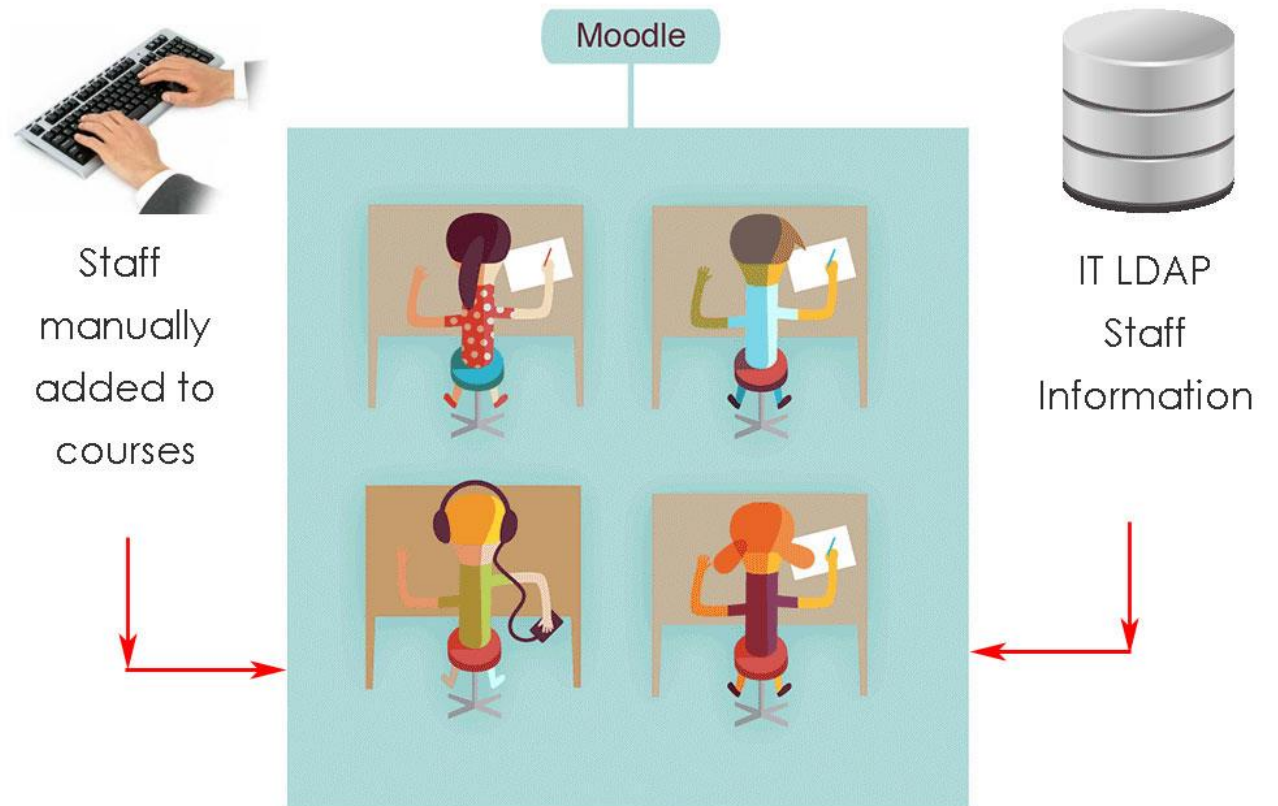


How are staff added to courses?

Staff account data is provided by IT on a system called LDAP. This information is also fed into Moodle.

Staff are manually added on to their courses as there is no database that holds this information.

If you need to be added to a course you will need to ask a course member to add you or you can email dlsupport@arts.ac.uk



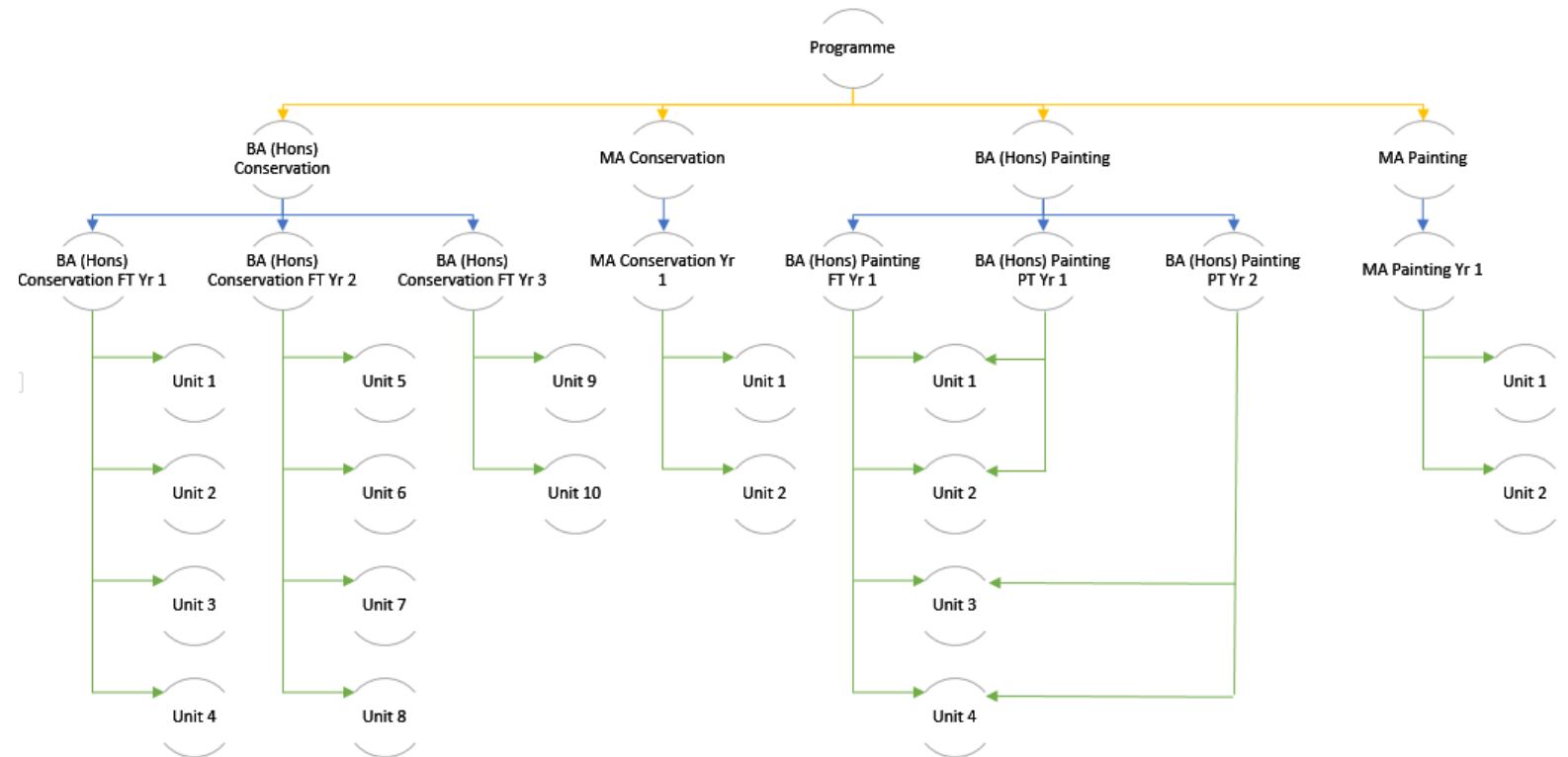
So how are the courses structured in Moodle?

Courses are structured based on the information that is fed to Moodle from Registry's database called QL.

- Programme
- All Courses Year/Mode
- Course Year/Mode
- Unit

It is up to the course team to decide what spaces they would like to use for the set up of their courses.

All spaces are initially available but not all spaces have to be used. If you decide to use just the year spaces you can do this.



What does the course structure look like in Moodle?

Moodle Courses Page

The Courses page shows how the course structure will look when you are in Moodle.

This menu will be available on the Courses page only.

The current year will show at the top and the courses will be clustered by programme. Current year courses will have blue icons and previous year courses will have black.

If you have access to more than one programme the list of courses and units will sit underneath each Programme.

The screenshot shows the Moodle interface for the University of the Arts London. At the top, there is a navigation bar with links: Moodle, My Courses, My Assessment Feedback, My Timetable, Library, Academic Support, Course Regulations, and Moodle Help. Below this is the UAL logo and a 'Courses' breadcrumb. The main heading is 'My Courses'. A programme is selected, 'Film, Sound and Television', indicated by a blue 'P' icon. Underneath, there are two groups of courses. The first group, '17/18 BA (Hons) Film and Television', is highlighted with blue icons and includes three LCC Full-time Year courses (Year 1, 2, and 3). The second group, '16/17 BA (Hons) Film and Television', is shown with black icons and also includes three LCC Full-time Year courses (Year 1, 2, and 3). Below these are two other programmes: 'International Students Preparation for study' and 'LCC Health & Safety', both with blue icons.

How do I get around in Moodle?

Content Block

The content block appears within your courses. This block allows users to navigate the section topics within your course.

Students need clear indications of where to find information. Please label your section topics clearly so the user can access the information easily.

This block can be hidden, deleted or docked within your course.

Content	
General	
Key Course Information	
Submission & Assessment Information	
Examination Results	
Personal and Professional Development	
Health & Safety	

Contact

Digital Learning Support Team

dlsupport@arts.ac.uk

Technology Enhanced Learning Co-ordinators

- Vija Skangale– CCW
- Jennifer Williams-Baffoe – CSM
 - Eleanor Dare – LCC
 - Caroline Rogers – LCF

Resources

<http://technologyenhancedlearning.myblog.arts.ac.uk>